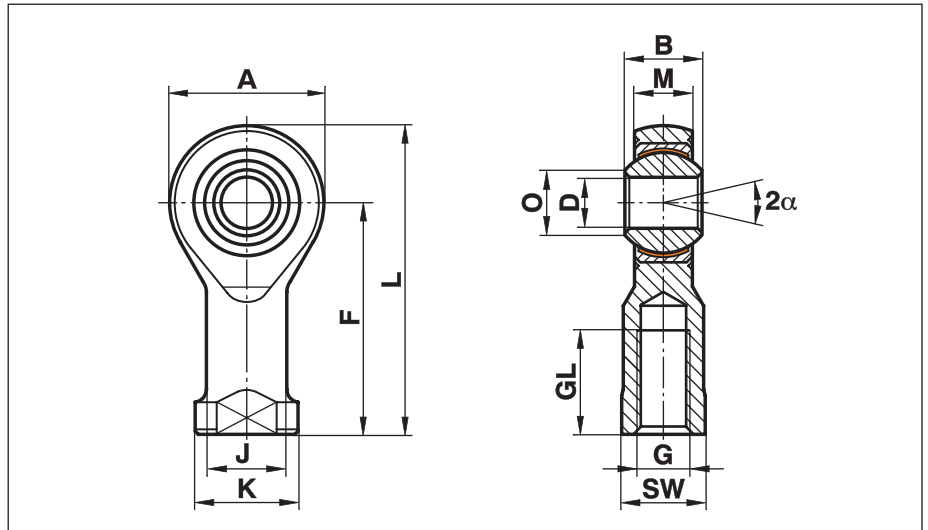


Rod Ends Motor Sport Maintenance Free

Series GIXSW..MS

Rod Ends with female thread made from heat-treated steel, nickel plated with PTFE-liner, maintenance free. Preloaded bearing

For use at highest dynamic pressure and tension loads in corrosive environments



Description	DH7	B	M	A	F	L	K	J	O	SW	G	GL	static radial load C ₀ kN	dynamic radial load C ₀ kN	torque N/dm	α	weight g
GIXSW 6 MS	6	9	6,75	20	30	40	13	10,0	8,9	11	M 6x1	12	16,7	9,8	4-10	13°	27
GIXSW 8 MS	8	12	9,00	24	36	48	16	12,5	10,4	13	M 8x1,25	16	25,5	20,0	4-12	14°	46
GIXSW 10x1,25 MS	10	14	10,50	28	43	57	19	15,0	12,9	17	M 10x1,25	20	34,8	28,1	6-16	13°	76
GIXSW 10 MS	10	14	10,50	28	43	57	19	15,0	12,9	17	M 10x1,5	20	34,8	28,1	6-16	13°	76
GIXSW 12x1,25 MS	12	16	12,00	32	50	66	22	17,5	15,4	19	M 12x1,25	22	42,0	38,4	10-22	13°	115
GIXSW 12 MS	12	16	12,00	32	50	66	22	17,5	15,4	19	M 12x1,75	22	42,0	38,4	10-22	13°	115
GIXSW 14 MS	14	19	13,50	36	57	75	25	20,0	16,8	22	M 14x2	25	57,0	50,5	12-24	16°	170
GIXSW 14x1,5 MS	14	19	13,50	36	57	75	25	20,0	16,8	22	M 14x1,5	25	57,0	50,5	12-24	16°	170
GIXSW 16 MS	16	21	15,00	42	64	85	27	22,0	19,3	22	M 16x2	28	67,5	63,0	14-28	15°	230
GIXSW 16x1,5 MS	16	21	15,00	42	64	85	27	22,0	19,3	22	M 16x1,5	28	67,5	63,0	14-28	15°	230
GIXSW 18 MS	18	23	16,50	46	71	94	31	25,0	21,8	27	M 18x1,5	32	81,5	76,5	18-32	15°	320
GIXSW 20 MS	20	25	18,00	50	77	102	34	27,5	24,3	32	M 20x1,5	33	93,5	93,5	20-34	14°	415

Materials:

Housing: Heat-treated steel to 42CrMo4, Aisi 4140, forged, nickel plated with high polish finish.

Insert: Stainless steel to 1.4571, Aisi 316Ti with PTFE liner bonded to the inner surface

Ball: Bearing steel to 100Cr6, Aisi 52100, hardened, ground, polished, hard chrome plated on the running surface

Clearance: preloaded, zero tolerance

On request:

- with left hand thread
- Rod End with reduced bore (D)
- with threaded bolt
- further sizes are available